

# Liaison Athena®

There's no easier way to enjoy EDI than with Athena, Liaison's low-cost Web EDI solution. With no software to install and the gentlest of learning curves, you'll be exchanging EDI documents with your trading partners in a matter of hours. In an environment that's as familiar as e-mail.

You'll have all the sophistication of a desktop application, without any of the complications. No installation procedure. No operating system conflicts. Just a maintenance-free, user-friendly, accessible-from-anywhere Web application that places no limits on the number of EDI trading partners or documents that you can manage from its interface.

select a tab to continue ▶▶▶

# Sleek Interface

There's nothing clunky about Athena's interface. As a rich Internet application (RIA), Athena provides a Web experience that is light and flexible. Page refreshes are a thing of the past and so are invasive pop-up windows. In other words, Athena has all the convenience of a Web application, without compromising the ease of movement that comes with a desktop application.

## Multiple Users

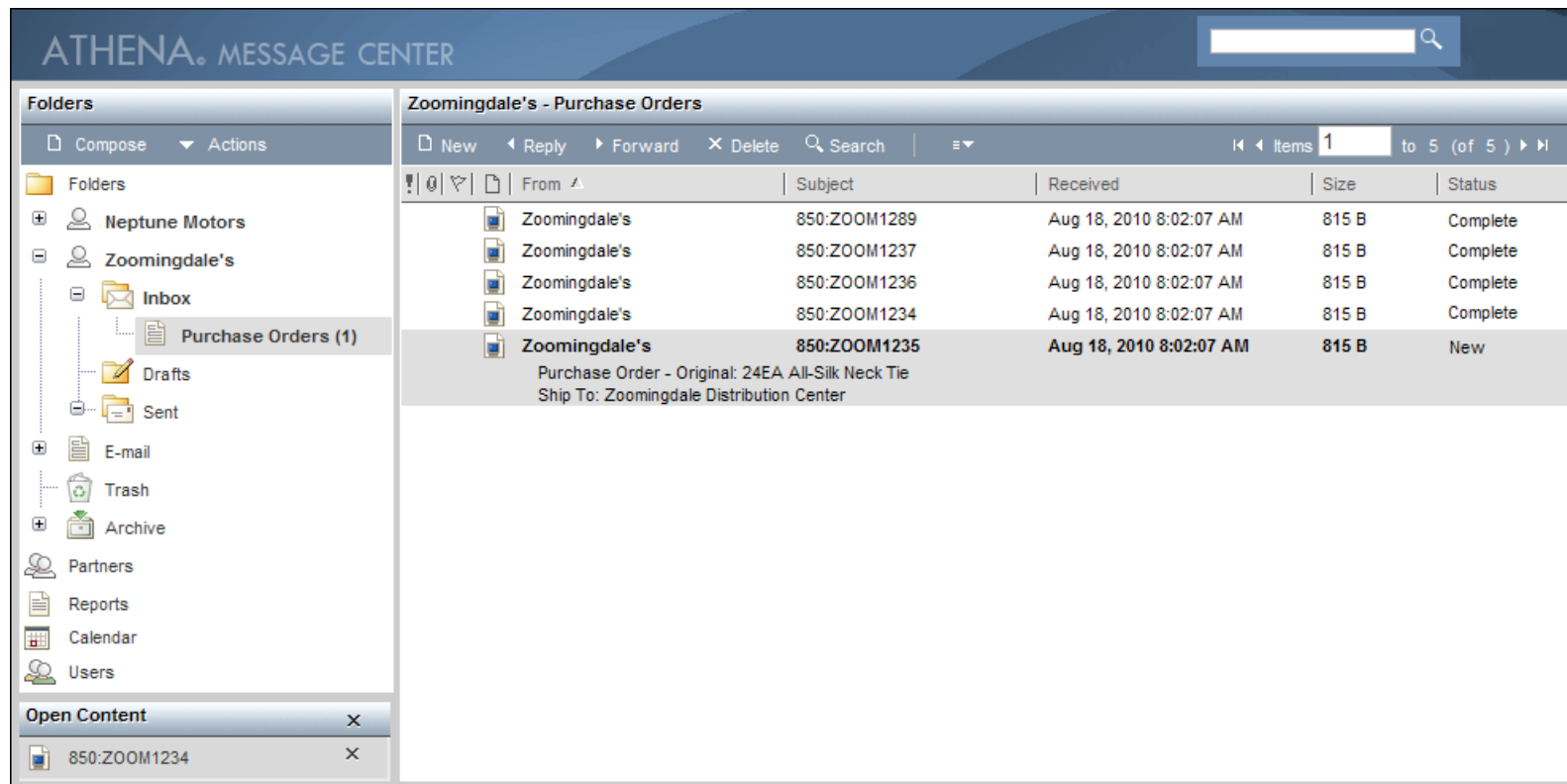
Athena supports an unlimited number of users and five user roles that range from administrator to read-only privileges.

## Easy as E-mail

Athena makes the viewing, creation, and exchange of EDI documents as easy as e-mail. New messages arrive in the Inbox and sent messages live in the Sent folder. The commands will be familiar to you as well. For example, you'll use the reply command to create an invoice in response to a purchase order.

## Customizing the Interface

Many aspects of Athena's interface are customizable on a per-user basis. For example, you can customize folder organization, message preview settings, and even interface language (Athena speaks Dutch, English, French, German, and Spanish).



Sleek Interface

Easy EDI Document Creation

Document Management

Bar Coding

Introduction

Features

System Requirements & Pricing

# Easy EDI Document Creation

For each trading partner that you exchange EDI documents with, Athena features a custom template, called a trading partner kit (TPK). TPKs are add-on modules for Athena that are based on your trading partners' EDI implementation conventions. They determine which types of EDI documents you send to your trading partners and the information contained within those documents.

## Attractive HTML Forms

When you create or reply to an EDI document in Athena, the appropriate TPK is invoked and an attractive form displays, prompting you for the exact information required by that trading partner for the type of document you are creating. Athena will auto-fill as many fields in the form as possible for you (using information from the document that you're responding to) to reduce data entry.

In addition, you can create defaults for any field in the form. For example, if your company's terms of sale never change, you can make those values into defaults that Athena will always use when bringing up the form.

## Data Compliance

Athena compares the data in your outgoing EDI document to your trading partner's specifications. If data is missing or invalid, Athena requires you to correct the errors before it will send the document to your trading partner. This ensures that you always send compliant EDI documents and avoid the fees that many trading partners assess for non-compliance.

## Automated Functional Acknowledgment Generation

When a document arrives in your Athena account, a functional acknowledgment is automatically returned, letting your trading partner know you received the document. Since most trading partners require functional acknowledgments, it's a huge help to have them handled automatically.

The screenshot shows a web browser window with the title "Invoice: WO00012938-2". The browser's address bar and menu (Send, Preview, Save, X Delete, Print, Set Default) are visible. The form content is as follows:

- Invoice Information:** Invoice Number: WO00012938-2; Invoice Date: 2/15/2008; P.O. Number: ACME49410; P.O. Date: 1/15/2008; Vendor's Payment Number: 2899T; Vendor Number: WO-102938.
- Address Information:** Ship-To Name: WIDGET DISTRIBUTION CENTER; Store Number: 01; Address: 1709 45TH STREET; City: SUMNER; State: WA; Postal Code: 98352.
- Additional Information:** Vendor's DUNS Number: 987854321; Date Shipped: 2/6/2008; checkboxes for Terms of Sale, F.O.B. Instructions, and Carrier Detail; an "Add Charge(s)/Allowance(s)" button.
- Line Item Information:** "Select All" and "Clear All" buttons; a list of line items with checkboxes. Line Item 1 is checked and contains: Vendor's Style Number: 5510; SKU Number: 6309470018; Units Shipped: 1400; Unit Price: 0.14; Measure: Each; Item Description: SILVER WIDGETS; Color: Silver; Size: (empty). Line Item 2 (Vendor's Style Number: LUS11) and Line Item 3 (Vendor's Style Number: M16-12Z) are unchecked.

A yellow callout box on the right side of the form contains the text: "To create an EDI document in Athena, simply fill in the form's fields and click Send."

Sleek Interface

Easy EDI Document Creation

Document Management

Bar Coding

# Document Management

Athena provides many features to help you stay on top of your EDI activities.

## Document Status

To ensure that you don't accidentally process a duplicate transaction, Athena automatically assigns a status of duplicate to incoming EDI documents that have the same sender, receiver, date, time, and control number as a previously received document. In addition to the duplicate status, there are several other statuses that you can assign to documents such as pending or in process. You can also create your own custom statuses.

## Search

You can quickly locate any type of message (e-mail or EDI) across your entire account using Athena's broad keyword search field. Or, you can perform more advanced searches based on EDI-specific-criteria such as control number or sender ID.

## EDI Exports

If you want to get your hands on the raw EDI data that is passing through your Athena account, you can export the EDI document or forward it as an attachment.

## Document Reports

Athena's report module lets you quickly summarize a variety of EDI activities such as EDI documents that have not yet been acknowledged by your trading partners, all sent or received EDI documents, or EDI documents that have been rejected by your trading partners. These reports can be run for all EDI documents or can be restricted to a particular document type, trading partner, or both.

Reports

Submit Cancel

Report Type: Documents Unacknowledged

Start Date:

End Date:

Limit report to specific trading partner: Any

Limit report to specific document type: Any

Exclude deleted documents

Include archived messages in report

Sleek Interface

Easy EDI Document Creation

Document Management

Bar Coding

## Alerts

You'll always know if an important EDI document is—or isn't—waiting for you when you take advantage of Athena's mailbox messenger service. Using this service, you can configure Athena to alert you (via e-mail) to the arrival of a new EDI document. The mailbox messenger service also ties into Athena's built-in calendar, which tracks important dates such as delivery dates in your arriving EDI documents.

Preferences

Save

General Mailbox Messenger Folders Messages Custom Statuses

Mailbox Messenger

Send an e-mail alert to an external address when new documents arrive

Create calendar entries corresponding to dates in incoming EDI messages

Send a reminder e-mail before each EDI-related calendar event

1 days in advance

E-mail address: randyl@firstsource.com; jenniferb@firstsource.com

Documents that are returned in a report's results can be opened or, if previously deleted, restaged.

Timestamp	Type	Reference	Interchange Control	Group Control	Document Control	Recipient	Recipient Qual/ID
Feb 29, 2008 12:24:58 PM	810	3421 (STAR3421)	000000052	52	0052	Starbuckets	ZZ/STAR
Feb 25, 2008 3:39:53 PM	810	0864 (STAR0864)	000000051	51	0051	Starbuckets	ZZ/STAR
Feb 25, 2008 9:36:36 AM	810	1235 (ZOOM6783)	000000004	4	0004	Zoomingdale's	ZZ/ZOOM
Feb 22, 2008 11:09:45 AM	810	8641 (STAR8641)	000000050	50	0050	Starbuckets	ZZ/STAR

# Bar Coding

If your trading partners require bar codes, you can create and print bar code labels right from Athena. The printed bar codes match the bar code numbers that are sent with your advance ship notices, allowing your trading partners to cross reference your shipments when they arrive.

Advance Ship Notice: 450782-SHIP

Send Preview Save Delete Print Print Bar Codes Set Default

### Advance Ship Notice

**Bold = Required Field**

**General Information**

Shipment ID Number: 450782-SHIP Purchase Order Number: \_\_\_\_\_  
 Vendor Order Number: \_\_\_\_\_ Seller's Invoice Number: \_\_\_\_\_  
 Vendor ID Number: FIRSTSRC

**Carrier/Shipment Information**

Shipped Date: 2/20/2010 SCAC: \_\_\_\_\_  
 Shipped Quantity: 5 Shipped Volume: \_\_\_\_\_

**Ship-From Address**

Company Name: FIRST SOURCE KENTUCKY  
 Address: 4448 VIA ESPERANZA  
 City: LEXINGTON  
 State: KY Postal Code: 40503

**Ship-To Address**

Plant Code: D0VP  
 Company Name: CARDINAL PRESS  
 Address: 1804 ANASTASIA DRIVE  
 City: GOODYEAR  
 State: AZ Postal Code: 85286

**Vendor Address**

ID Number: 1149  
 Vendor: FIRST SOURCE KENTUCKY  
 City: LEXINGTON  
 State: KY Postal Code: 40503

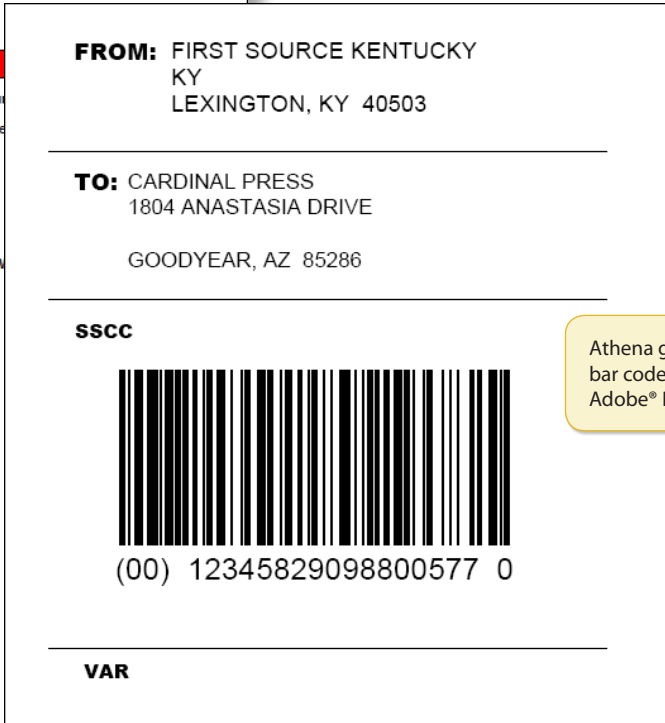
**Shipment/Packaging Detail**

Add Pack 1 UCC-128 Number: 001234582909880057

Select the line items you want included in this carton/package/pallet

Line 00010 - Catalog Number: ZL1013

Buyer's Catalog Number: 551013 Vendor's Catalog Number: FRS8329  
 Quantity Shipped: 3 Unit of Measure: Case



Athena generates bar codes in Adobe® Reader®.

Sleek Interface

Easy EDI Document Creation

Document Management

Bar Coding

Introduction

Features

System Requirements & Pricing

## System Requirements

All you need to access Athena is an Internet Service Provider (ISP) and Web browser. Any ISP is fine, but for your Web browser you must use Microsoft Internet Explorer® (version 7.0 or later) or Mozilla Firefox® (version 2.0 or later).

## Pricing

Because Athena is a software application and network service rolled into one, pricing is subscription based. Our low-cost subscriptions are tiered so that you only pay for the resources that you use.